

TEST REPORT

Report No.: B2337.01-602-44

Rendered to:

PROFORMANCE MANUFACTURING INC
Lone Rock, Wisconsin

PRODUCT TYPE: 36 x 80 Fiberglass Casement Window

SERIES/MODEL: Prostar/Ecostar Casement

SPECIFICATION: AAMA/WDMA/CSA 101/I.S.2/A440-08, *NAFS - North American Fenestration Standard/Specification for Windows, Doors, and Skylights*

AAMA/WDMA/CSA 101/I.S.2/A440-05, *Standard/Specification for Windows, Doors, and Unit Skylights.*

Title	Summary of Results
Primary Product Designator AAMA/WDMA/CSA 101/I.S.2/A440-08	Class CW-PG45 Size Tested: 914 x 2032 (36 x 80)-C
AAMA/WDMA/CSA 101/I.S.2/A440-05	C-C45 914 x 2032 (36 x 80)
Design Pressure	±2160 Pa (±45.11 psf)
Air Infiltration	0.15 L/s/m ² (0.03 cfm/ft ²)
Canadian Air Infiltration/Exfiltration Level	A2
Water Penetration Resistance Test Pressure	510 Pa (10.65 psf)

Test Completion Date: 08/10/2011

Reference must be made to Report No. B2337.01-602-44-R1, dated 09/27/11 for complete test specimen description and detailed test results.

1.0 Report Issued To: Proformance Manufacturing, Inc.
P.O. Box 58/750 North County Line Road
Lone Rock, Wisconsin 53556

2.0 Test Laboratory: Architectural Testing, Inc.
5906 Saxon Avenue
Schofield, Wisconsin 54476
715-241-8624

3.0 Project Summary:

3.1 Product Type: 36 x 80 Fiberglass Casement Window

3.2 Series/Model: Prostar/Ecostar Casement

Compliance Statement: Results obtained are tested values and were secured by using the designated test method(s). The specimen tested successfully met the performance requirements for a **Class CW-PG45 Size Tested: 914 x 2032 (36 x 80)-C and C-C45 914 x 2032 (36 x 80)** rating.

3.3 Test Dates: 08/04/2011 - 08/10/2010

3.4 Test Location: Architectural Testing, Inc. test facility in Schofield, Wisconsin.

3.5 Test Sample Source: The test specimen was provided by the client. Representative samples of the test specimen will be retained by Architectural Testing for a minimum of four years from the test completion date.

3.6 Drawing Reference: The test specimen drawings have been reviewed by Architectural Testing and are representative of the test specimen(s) reported herein. Test specimen construction was verified by Architectural Testing per the drawings located in Appendix B. Any deviations are documented herein or on the drawings.

3.7 List of Official Observers:

<u>Name</u>	<u>Company</u>
Jerry Beranek	Proformance Manufacturing, Inc.
Jeff Zibton	Architectural Testing, Inc.
Eric Jehn	Architectural Testing, Inc.
Audrey Matis	Architectural Testing, Inc.

4.0 Test Specification(s):

AAMA/WDMA/CSA 101/I.S.2/A440-08, *NAFS - North American Fenestration Standard/Specification for Windows, Doors, and Skylights*

AAMA/WDMA/CSA 101/I.S.2/A440-05, *Standard/Specification for Windows, Doors, and Unit Skylights.*

5.0 Test Specimen Description:

5.1 Product Sizes:

Overall Area: 1.9 m ² (20.0 ft ²)	Width		Height	
	millimeters	inches	millimeters	inches
Overall size	914	36	2032	80
Sash	852	33-9/16	1970	77-9/16

5.2 Frame Construction:

Frame Member	Material	Description
Head, sill and jambs	Fiberglass	Pultruded

	Joinery Type	Detail
All corners	Mitered	Corner key and silicone sealed into place.

5.3 Sash Construction:

Sash Member	Material	Description
Top rail, bottom rail and stiles	Fiberglass	Pultruded
Glazing	Vinyl	Extruded

	Joinery Type	Detail
All corners	Mitered	Corner key and silicone sealed into place.

5.0 Test Specimen Description: (Continued)

5.4 Weatherstripping:

Description	Quantity	Location
0.437" wool pile with fin	1	Sash perimeter
0.250" wool pile with fin	1	Sash perimeter interior face
0.250" diameter bulb	1	Sash perimeter

5.5 Glazing:

Glass Type	Spacer Type	Interior Lite	Exterior Lite	Glazing Method
19.1 mm (3/4") IG	12.7 mm (1/2") steel spacer system	3.2 mm (1/8") annealed	3.2 mm (1/8") annealed	The glass was set from the exterior against glazing tape. Vinyl glazing beads were used at the exterior.

Location	Quantity	Daylight Opening		Glass Bite
		millimeters	inches	
Sash	1	745 x 1862	29-5/16 x 73-5/16	5/8"

5.6 Drainage:

Drainage Method	Size	Quantity	Location
Hole	1/4"	2	Bottom rail of sash 3-5/8" from each stile

5.7 Hardware:

Description	Quantity	Location
14" hinge with track	2	Top rail and bottom rail
Operator	1	Frame sill
Three point lock	1	Strike side jamb 3-3/4", 35-7/8", and 68" from frame sill
Lock keeper	3	Adjacent to lock point locations
2-piece snubber	3	Hinge side 19-1/2", 38-1/2", and 57-1/2" from frame sill

5.0 Test Specimen Description: (Continued)

5.8 Reinforcement: No reinforcement was utilized.

6.0 Installation:

The specimen was installed into a Spruce-Pine-Fir wood buck. The rough opening allowed for a 1/4" shim space. The exterior perimeter of the window was sealed with sealant.

Location	Anchor Description	Anchor Location
Frame jambs	#10 x 1-3/4" screw	4-1/2", 26-11/16, 53-5/16", and 75-1/2" from the frame sill.

7.0 Test Results: The temperature during testing was 26°C (78°F). The results are tabulated as follows:

Title of Test	Results	Allowed	Note
Operating Force, per ASTM E 2068	Initiate motion: 4 N (1 lbf) Maintain motion: 13 N (3 lbf) Locks: 27 N (6 lbf)	Report Only 45 N (10 lbf) max. 100 N (22.5 lbf) max.	
Air Leakage, Infiltration per ASTM E 283 at 75 Pa (1.57 psf)	0.2 L/s/m ² (0.03 cfm/ft ²)	1.5 L/s/m ² (0.3 cfm/ft ²) max.	1
Air Leakage, Exfiltration per ASTM E 283 at 75 Pa (1.57 psf)	0.2 L/s/m ² (0.04 cfm/ft ²)	1.5 L/s/m ² (0.3 cfm/ft ²) max.	1
Canadian Air Infiltration/Exfiltration Level	A2	N/A	
Water Penetration, per ASTM E 547 ASTM E 331	N/A	N/A	2
Uniform Load Deflection, per ASTM E 330	N/A	N/A	2
Uniform Load Structural, per ASTM E 330	N/A	N/A	2
Forced Entry Resistance, per ASTM F 588, Type: B - Grade: 10	Pass	No entry	

7.0 Test Results: (Continued)

Title of Test	Results	Allowed	Note
Sash Vertical Deflection 270 N (60 lbf)	0.5 mm (0.02")	17 mm (0.67") max.	
Distributed Load 300 Pa (6.27 psf)	Pass	No damage	
Optional Performance			
Water Penetration, per ASTM E 547 at 510 Pa (10.65 psf)	Pass	No leakage	
Uniform Load Deflection, per ASTM E 330 taken at strike stile +2160 Pa (+45.11 psf) -2160 Pa (-45.11 psf)	0.3 mm (0.01") 0.8 mm (0.03")	5.6 mm (0.22") max. 5.6 mm (0.22") max.	3, 4
Uniform Load Structural, per ASTM E 330 taken at strike stile +3240 Pa (+67.67 psf) -3240 Pa (-67.67 psf)	0.3 mm (0.01") 0.3 mm (0.01")	3.0 mm (0.12") max. 3.0 mm (0.12") max.	3, 4, 5

Note 1: The tested specimen meets (or exceeds) the performance levels specified in AAMA/WDMA/CSA 101/I.S.2/A440 for air leakage resistance.

Note 2: The client opted to start at a pressure higher than the minimum required. Test results are reported under Optional Performance.

Note 3: The deflections reported are not limited by AAMA/WDMA/CSA 101/I.S.2/A440 for this product designation. The deflection data is recorded in this report for special code compliance and information only.

Note 4: Loads were held for 10 seconds.

Note 5: Tape and film were used to seal against air leakage during structural testing. In our opinion, the tape and film did not influence the results of the test.

The service life of this report will expire on the stated Test Record Retention End Date, at which time such materials as drawings, data sheets, samples of test specimens, copies of this report, and any other pertinent project documentation, shall be discarded without notice.

If test specimen contains glazing, no conclusions of any kind regarding the adequacy or inadequacy of the glass in any glazed test specimen(s) can be made. This report does not constitute certification of this product nor an opinion or endorsement by this laboratory. It is the exclusive property of the client so named herein and relates only to the specimen(s) tested. This report may not be reproduced, except in full, without the written approval of Architectural Testing, Inc.

For ARCHITECTURAL TESTING, Inc.

Eric J. Jehn
Technician

Jeffrey M. Zibton
Project Manager

EJJ:asm

Attachments (pages): This report is complete only when all attachments listed are included.

Appendix-A: Alteration Addendum (1)

Appendix-B: Drawings (11)



Test Report No.: B2337.01-602-44
Report Date: 09/07/11
Test Record Retention End Date: 08/10/15
Revision 1: 09/27/11

Revision Log

Rev. #	Date	Page(s)	Revision(s)
1	09/27/11	Cover page and page 1	Added Ecostar to the Series/Model.

Test Report No.: B2337.01-602-44
Report Date: 09/07/11
Test Record Retention End Date: 08/10/15
Revision 1: 09/27/11

Appendix A

Alteration Addendum

Note: *No alterations were required.*

Test Report No.: B2337.01-602-44
Report Date: 09/07/11
Test Record Retention End Date: 08/10/15
Revision 1: 09/27/11

Appendix C

Drawings

Casement BOM

Description	Vendor	Part #
✓ Dual Casement Operator	Ashland Hardware	W1491-200/W1491-100
✓ Casement Sash	Teel Plastics	P0006
✓ Casement Frame	Teel Plastics	P0005
✓ Glazing Bead	Teel Plastics	P0136
69" Tie Bar	Ashland Hardware	WCMS4-693003
Backing Plate	Ashland Hardware	W1492-9A1
✓ Snubber	Ashland Hardware	WCS-1601-S1
Bracket	Ashland Hardware	W1491-188-BS1/W1491-288-BS1
✓ 14" Wash Hinge Arm Assembly	Ashland Hardware	Top hinge in diagram
✓ Keeper	Ashland Hardware	W1495-01AL2
Lock Actuator	Ashland Hardware	W1492-1KH1
Visual Pack	Ashland Hardware	W1490-700/W1490-800
Retainer	Ashland Hardware	W1494-04DA-P84
Frame Corner Keys	Flambeau	817711AE
Sash Corner Keys	Flambeau	Sash Corner Key

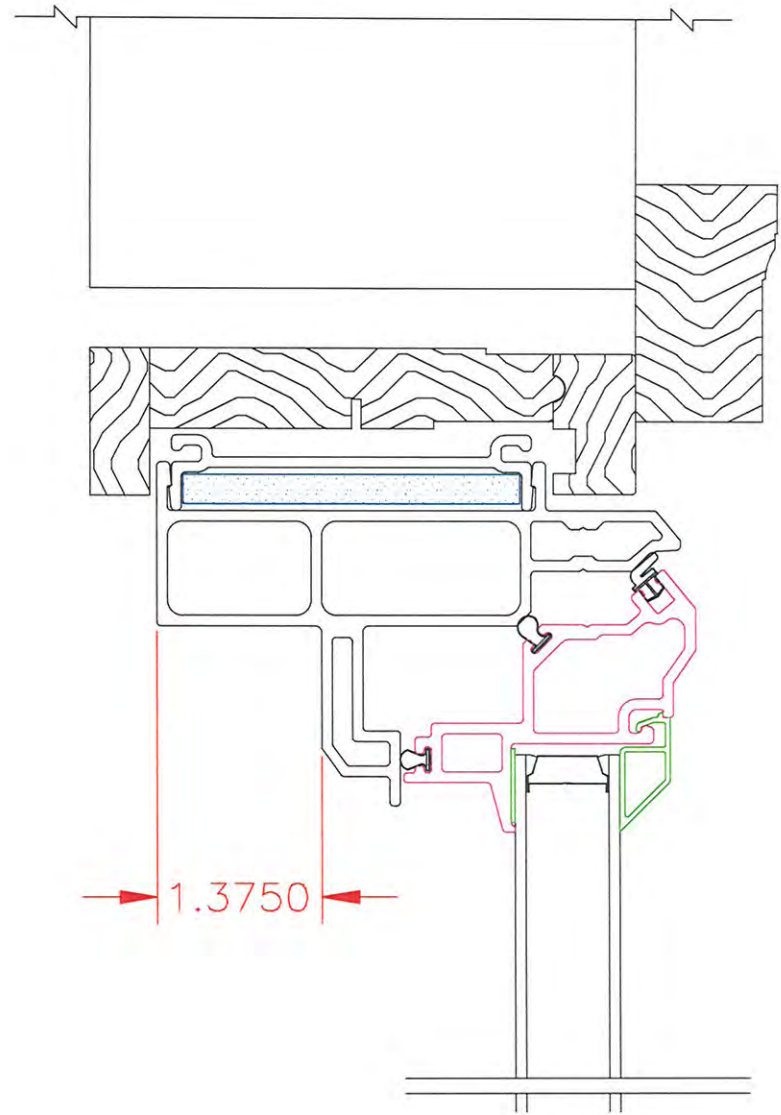
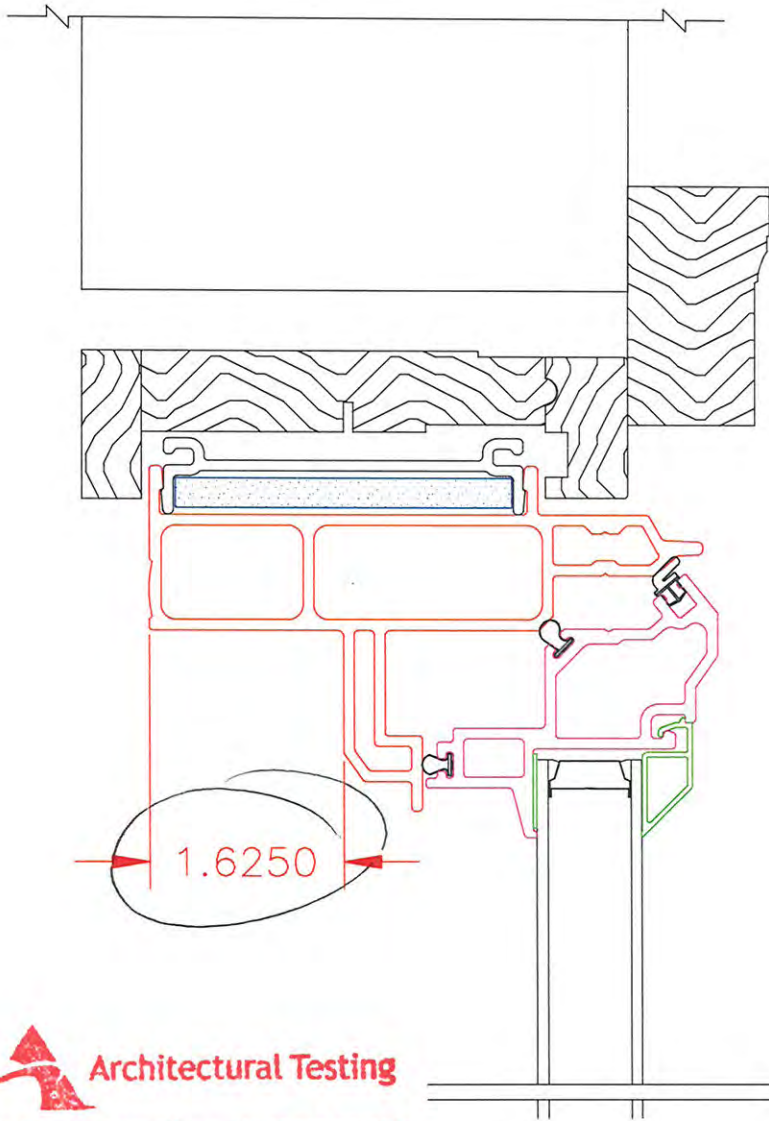


Architectural Testing

Test sample complies with these details.
Deviations are noted.

Report# B2337.01
Date 9/1/11 Tech EJ

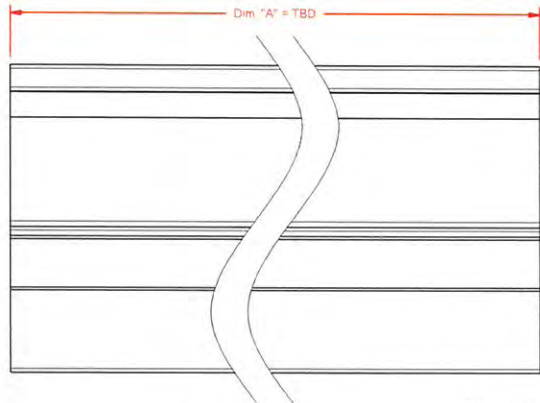




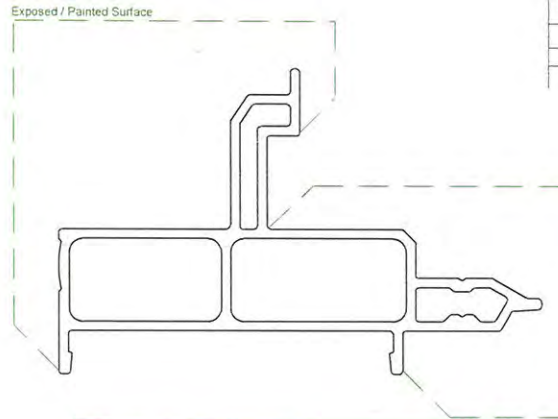
Test sample complies with these details.
Deviations are noted.

Report# B2337.01
Date 9/1/11 Tech EJ





Trim Detail
Scale: None



REVISIONS				
ZONE	REV	DESCRIPTION	DATE	APPROVED
	.01	Added Radius Inside Edge	02.03.2011	PMI
	.02	Changed Sash Stop Location by .250". Changed lip	02.16.2011	PMI
	.03	Changed Inside Wall Location by .250"	02.17.2011	PMI



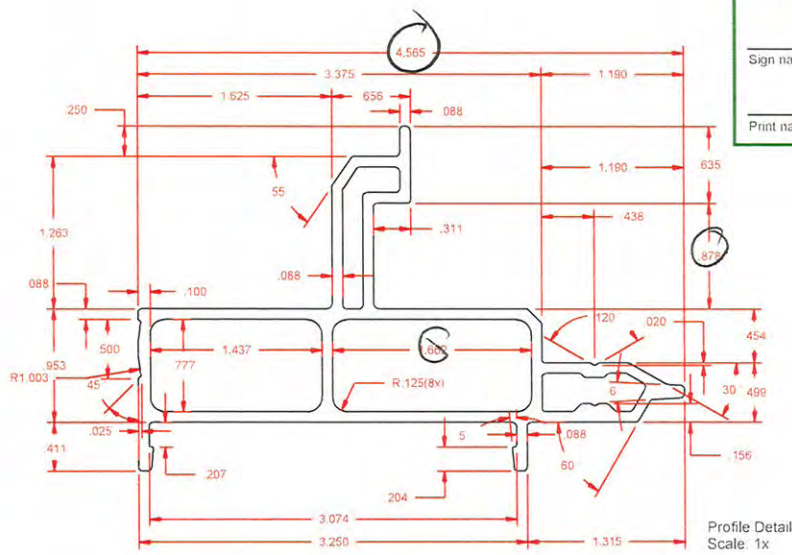
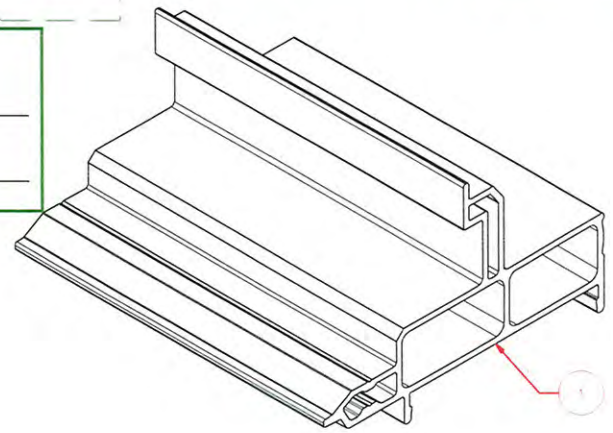
Test sample complies with these details.
Deviations are noted.

Report# B2337.01
Date 9/1/11 Tech EJ

Customer Approval

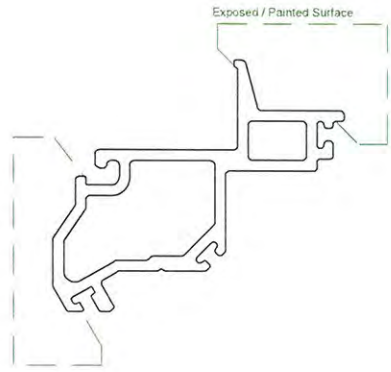
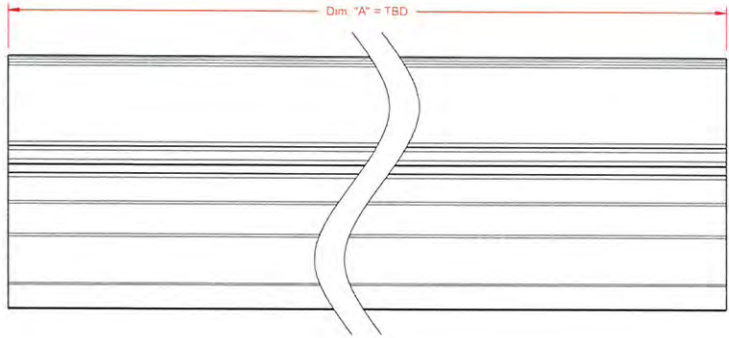
Sign name on line above Date

Print name on line above



Profile Detail
Scale: 1x

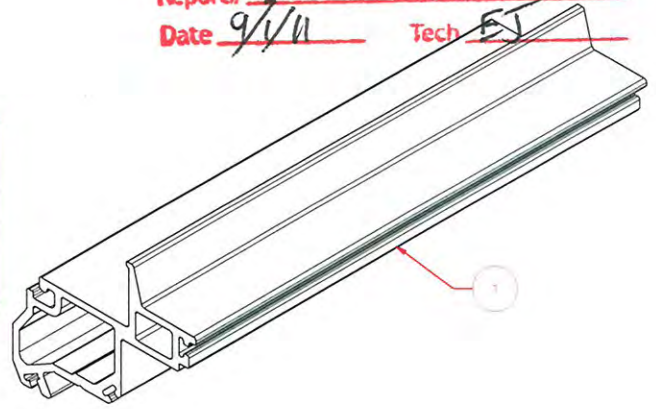
Item #	Part Name	PMI Part Number	Cost Center	Revision	Comment							
1	Casement Frame Profile	P0005	Area: 1.451", Outer Perim: 15.750", Inner Perim: 14.290"									
Note: Industry Standard Tolerances Unless Otherwise Specified.		DRAWN PMI Engineering	DATE 02.17.2011	 <p>Proformance Manufacturing, Inc 750 North County Line Road Lone Rock, WI 53556 www.pmi-windows.com 608.583.7200 608.583.7060 Fax</p>								
		CHECKED										
		GA										
		MFG										
		APPROVED		<table border="1"> <tr> <td>SIZE B</td> <td>DWG NO. PMI-005.03</td> <td>DWG Name Casement Frame Profile</td> <td>REV .03</td> </tr> <tr> <td>SCALE As Noted</td> <td colspan="2">Directory NBO\PMI\Eng\Casement</td> <td>SHEET 1 of 1</td> </tr> </table>	SIZE B	DWG NO. PMI-005.03	DWG Name Casement Frame Profile	REV .03	SCALE As Noted	Directory NBO\PMI\Eng\Casement		SHEET 1 of 1
SIZE B	DWG NO. PMI-005.03	DWG Name Casement Frame Profile	REV .03									
SCALE As Noted	Directory NBO\PMI\Eng\Casement		SHEET 1 of 1									
The contents of this document or electronic media are confidential and proprietary information of Proformance Manufacturing, Inc. Distribution or reproduction of this information without the express written consent of Proformance Manufacturing, Inc. is prohibited. © 2010 PMI. All rights reserved.												



REVISIONS				
ZONE	REV	DESCRIPTION	DATE	APPROVED
	.01	Added Dim, Changed Exposed Surface	02.03.2011	PMI
	.02	Changed Angle on Outside Surface	02.16.2011	PMI
	.03	Bottom "T" Slot was "U" Slot	06.01.2011	PMI

Architectural Testing
 Test sample complies with these details.
 Deviations are noted.

Report# B2337.01
 Date 9/1/11 Tech ES

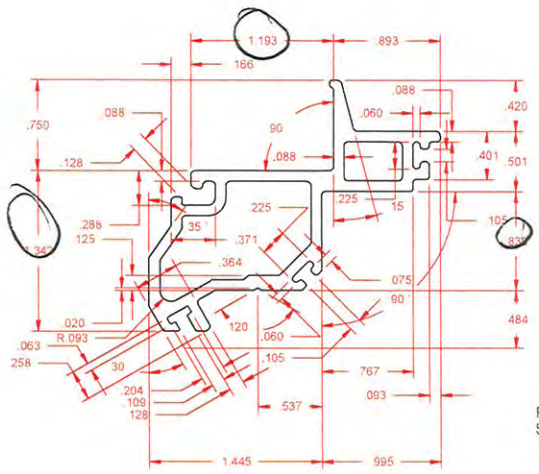


Trim Detail
Scale: 1x

Customer Approval

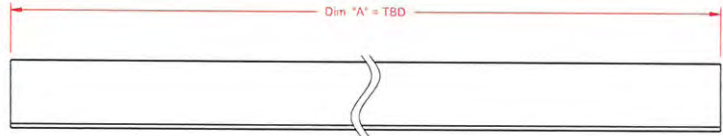
 Sign name on line above Date

 Print name on line above

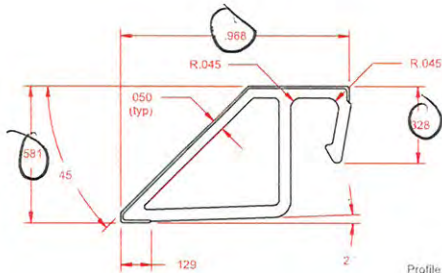
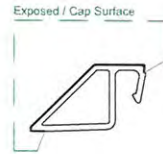


Profile Detail
Scale: 1x

Item #	Part Name	PMI Part Number	Cost Center	Revision	Comment
1	Casement Sash Profile	P0006	Area: .793", Outer Perim: 10.486", Inner Perim: 5.517"		
Note: Industry Standard Tolerances Unless Otherwise Specified.		DRAWN PMI Engineering	DATE 06.01.2011	 Proformance Manufacturing, Inc 750 North County Line Road Lone Rock, WI 53556 www.pmi-windows.com 608.583.7200 608.583.7060 Fax	
The contents of this document or electronic media are confidential and proprietary information of Proformance Manufacturing, Inc. Distribution or reproduction of this information without the express written consent of Proformance Manufacturing, Inc. is prohibited. © 2010 PMI. All rights reserved.		CHECKED			
		QA			
		MFG			
		APPROVED		SIZE B DWG NO. PMI-006.03 DWG Name: Casement Sash Profile REV .03	
		SCALE As Noted	Directory NBO\PMI\Eng\Casement	SHEET 1 of 1	



Trim Detail
Scale: 1x



Profile Detail
Scale: 2x

Customer Approval

Sign name on line above Date

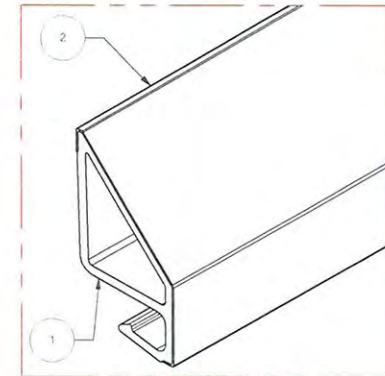
Print name on line above

REVISIONS				
ZONE	REV	DESCRIPTION	DATE	APPROVED
	01	Added Cap Area	01/26/2011	Teel



**Test sample complies with these details.
Deviations are noted.**

Report# B2337.01
Date 9/1/11 Tech EJ



Item #	PMI Part #	Part Name	Cost Center	Rev	Comment
1	P0136	Glazing Bead .726	Area: 116", Outer Perim: 3.201", Inner Perim: 1.781"	01	
2		Glazing Bead Cap .726	Area: 0139", Perimeter 2.791"		010" Nominal Cap Wall Thickness

Note: Industry Standard Tolerances Unless Otherwise Specified. The contents of this document or electronic media are confidential and proprietary information of Performance Manufacturing, Inc. Distribution or reproduction of this information without the express written consent of Performance Manufacturing, Inc. is prohibited. © 2010 PMI. All rights reserved.	DRAWN	PMI Engineering	DATE	01.26.2011
	CHECKED			
	GA			
	MFG			
APPROVED				

	Performance Manufacturing, Inc 750 North County Line Road Lone Rock, WI 53556 www.pmi-windows.com 608.583.7200 608.583.7060 Fax	
	SIZE: B DWG NO: PMI-106.01 SCALE: As Noted	DWG Name: Glazing Bead .726 Directory: PMI\Engineering\Accessory\Sash

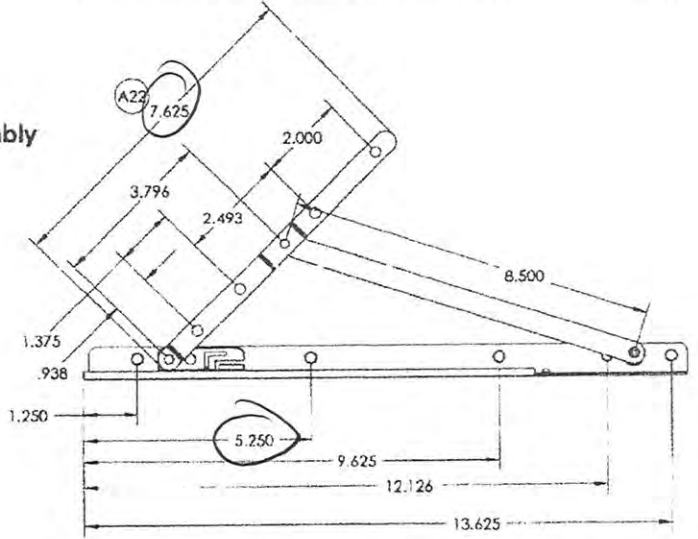
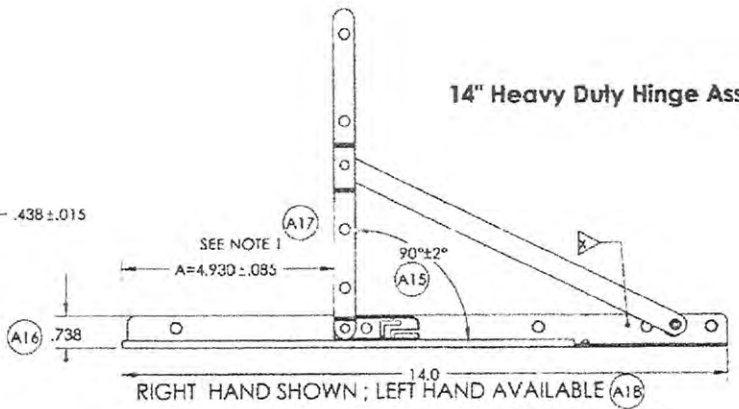
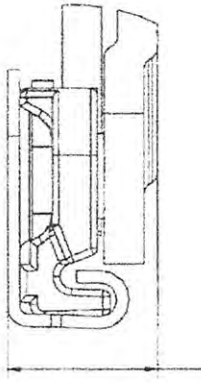
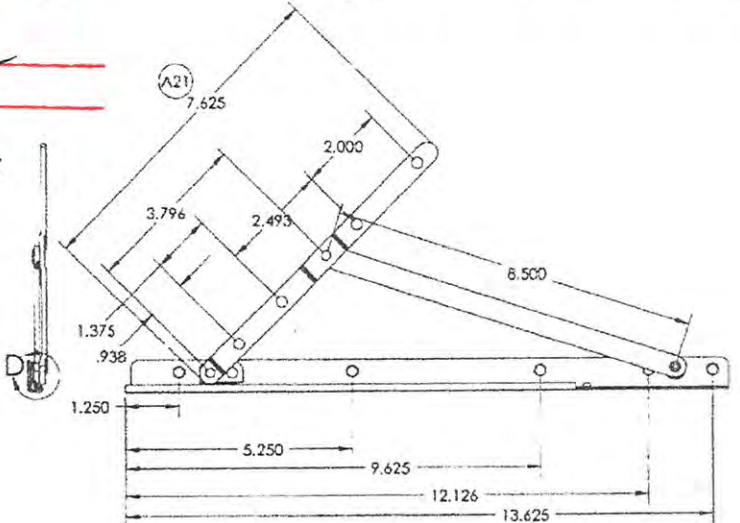
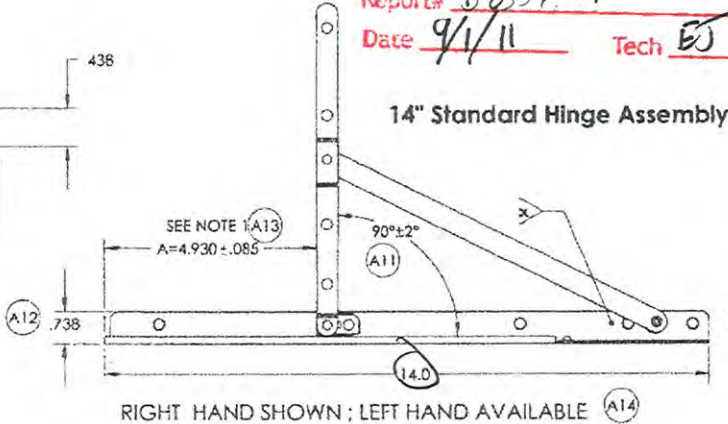
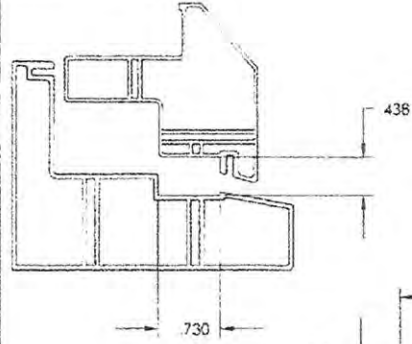


ECO#	LTR.	REVISION DESCRIPTION	INITIALS	DATE
34493	(A22)	INITIAL RELEASE	WRS	6/28/08
		SEE ECO	WRS	9/27/2008

Test sample complies with these details.
Deviations are noted.

Report# B22377.01
Date 9/1/11 Tech ES

PART/DWG NO. V-2161-700	REV A
SCALE DATE	FILE NO.



Description	7/18" (438) Assembly Number
14" Standard Assy, LH	WSA1230-14LO
14" Standard Assy, RH	WSA1230-14RO
14" Heavy Duty Assy, LH	WSA1230-14LO
14" Heavy Duty Assy, RH	WSA1230-14RO

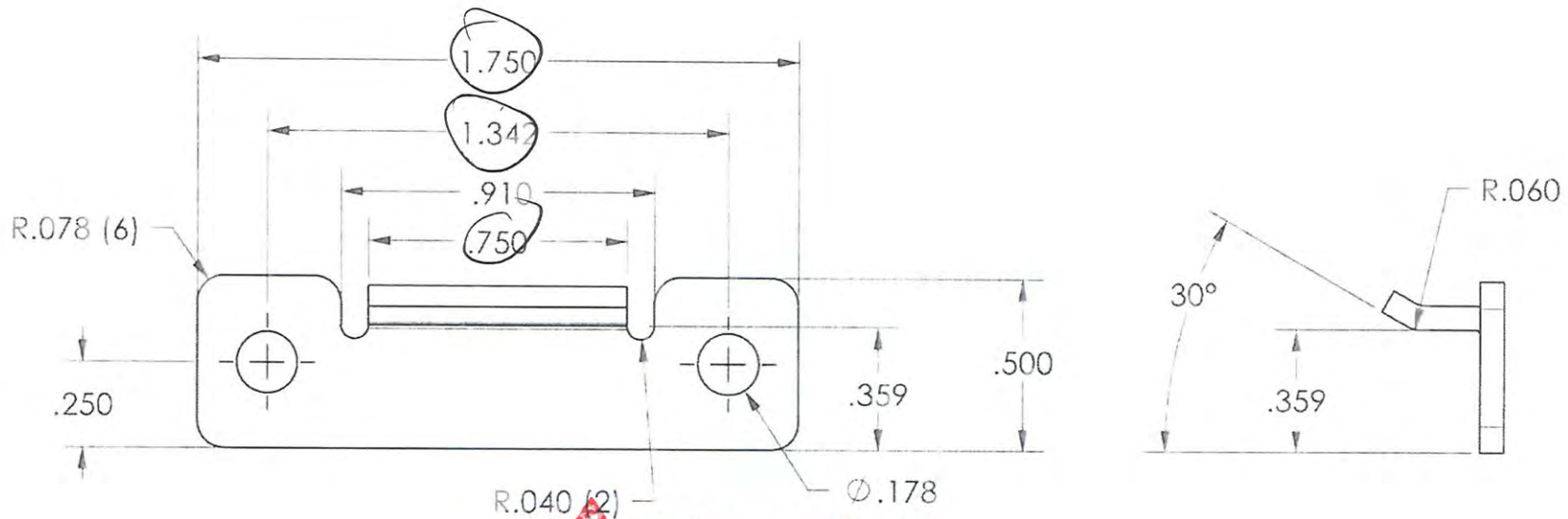
NOTES:
1. DIMENSION IS SUPERCEDED BY 90° ± 2° STOP (A19)

MOUNTING HOLES REQUIRED:
14" HINGE: 9 MOUNTING HOLES

RECOMMENDED SCREWS:
SASH ARM- #7 X 3/4" PHILLIPS, FLAT HEAD, STAINLESS STEEL SHEET METAL SCREWS
FRAME TRACK- #7 X 3/4" PHILLIPS, FLAT HEAD, UNDERCUT HEAD, STAINLESS STEEL SHEET METAL SCREWS

(A20) STAMP FOR HAND OF HINGE
"L" FOR LEFT HAND
"R" FOR RIGHT HAND

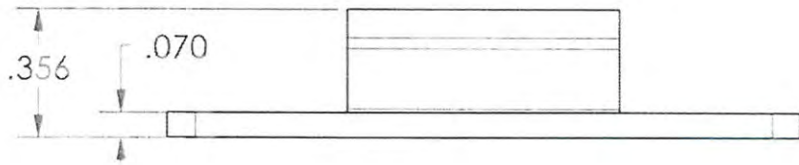
APPLICABLE SPECIFICATIONS	DRAWN	DATE	TITLE
	WRS	06/26/08	CASEMENT/ AWNING HINGE LAYOUT
<small>With approved materials, dimensions and weights. Material use (proprietary and confidential) and lead time is organizational or departmental and shall not be disclosed or distributed without the approval of the originator. Use of this document is limited solely to the purpose for which the document has been furnished.</small>	CHECKED	DATE	SCALE
	T. Hansel	07/15/08	1:2
	APPROVED FOR PRODUCTION	DATE	MATERIAL DESCRIPTION / TOOL INFORMATION
	C. Walls	07/10/08	300 SERIES STAINLESS STEEL (A24)
			ACTUAL MODEL WEIGHT
			4.43 LBS
			RAW TEMPER EDGE NO.
			PERMISSIBLE TOLERANCES UNLESS OTHERWISE SPECIFIED
			EXPERIMENTAL NO.
			SIZE
			C
			SHEET
			2 of 2
			PART NO.
			V-2161-700
			REV
			A



Architectural Testing

Test sample complies with these details.
 Deviations are noted.

Report# R2337,01
 Date 9/1/11 Tech ES



790 WEST COMMERCIAL AVENUE
 LOWELL, INDIANA 46356
 TELEPHONE NUMBER (219) 696-5950
 24 HR. FAX (800) 626-1758

SNUBBER

MATERIAL: S.S.
 CUSTOMER: AHS
 DRAWN BY: JLA DATE: 3/11/00 CK. BY: - DATE: -
 USED IN ASSY: - PROJ #: - PROTO. #: -
 CUBIC INCHES: - COMPONENT: - CAVITATION: -
 ~ NOTICE ~
 THIS DRAWING IS THE PROPERTY OF ASHLAND HARDWARE SYSTEMS. DESIGN CONCEPT & INFORMATION MAY NOT BE REPRODUCED USED OR DISCLOSED WITHOUT WRITTEN PERMISSION FROM ASHLAND.
 TOLERANCES UNLESS OTHERWISE SPECIFIED
 DECIMALS ±TOLERANCE
 1 PLC. - .X .030
 2 PLC. - .XX .015
 3 PLC. - .XXX .005
 ±TOLERANCE GREATER THAN .000 AS SHOWN PER INCH
 DIMENSIONS ARE IN INCHES UNLESS OTHERWISE SPECIFIED ON DRAWING
 DO NOT SCALE DRAWING
 SCALE = 2:1 SHEET: 1 of 1
 ASHLAND PART NUMBER

WCS-1601-S1

PATENT NUMBER: - STATUS: - INHERITED PATENTS: -

~ PATENT INFORMATION ~

NOTICE: We reserve the right to make design improvements without notice

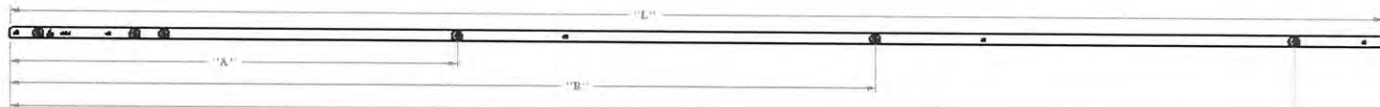


FIG. NO. V-1494-XXB
REV. B
DATE 03/11/11

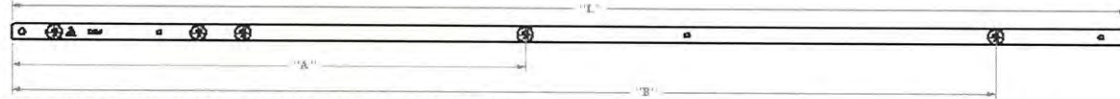


SECTION B-B

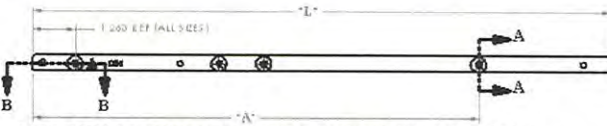
ECO #	LTR.	REVISION DESCRIPTION	INITIALS	DATE
.....	A	DRAWING RELEASE	RLL	4-19-07
34485	B1	WAC .S202.010	WRS	09/02/08



FOR LOCK BAR ASSEMBLIES V-1494-50B THRU V-1494-54B - 4-POINT
THIRD SCALE



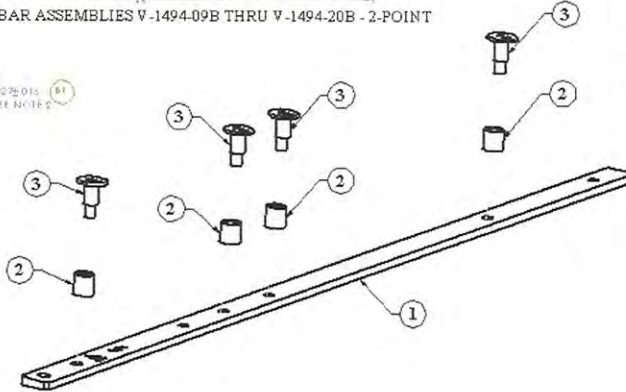
FOR LOCK BAR ASSEMBLIES V-1494-203B THRU V-1494-32B - 3-POINT
HALF SCALE



FOR LOCK BAR ASSEMBLIES V-1494-09B THRU V-1494-20B - 2-POINT
HALF SCALE



SECTION A-A
SCALE 2 : 1



NOTES:

- INSPECTION DIMENSIONS ARE DESIGNATED BY A NUMBERED PENTAGON AND SHOULD BE DESIGNATED IN THE CONTROL PLAN TO BE CHECKED AFTER EVERY TO-OL CHANGE AND/OR SETUP.
- AFTER ASSEMBLY, PEENING ON ALL PINS MUST BE FREE OF FORMING TEARS AND MUST MEET PULL OFF REQUIREMENTS OF AFR 177. ALL ROLLERS MUST TURN FREELY ON PINS.

ITEM #	ITEM DESCRIPTION	QTY	UNIT	ASSEMBLY	ITEM #	ITEM DESCRIPTION	QTY	UNIT	ASSEMBLY	
07	WCMEL-27000	V-1494-54B	S-1494-54	6	6	77.188	25.263	89.263	73.263	1302.6
70	WCMEL-33600	V-1494-53B	S-1494-53	6	6	73.188	23.529	66.596	69.263	1283.7
72	WCMEL-69000	V-1494-52B	S-1494-52	6	6	69.188	22.286	43.929	65.263	1224.9
08	WCMEL-65400	V-1494-51B	S-1494-51	6	6	65.188	21.263	41.263	61.263	1186.0
64	WCMEL-61800	V-1494-50B	S-1494-50	6	6	61.188	19.979	38.996	57.263	1099.1
80	WCMEL-71000	V-1494-32B	S-1494-32	5	5	77.188	37.263	73.263	1366.9
70	WCMEL-73000	V-1494-31B	S-1494-31	5	5	73.188	35.263	69.263	1288.1
12	WCMEL-48000	V-1494-30B	S-1494-30	5	5	69.188	33.263	65.263	1219.2
08	WCMEL-58000	V-1494-29B	S-1494-29	5	5	65.188	31.263	61.263	1150.4
64	WCMEL-61000	V-1494-28B	S-1494-28	5	5	61.188	29.263	57.263	1081.5
07	WCMEL-67000	V-1494-27B	S-1494-27	5	5	57.188	27.263	53.263	1012.6
58	WCMEL-63000	V-1494-26B	S-1494-26	5	5	53.188	25.263	49.263	943.8
08	WCMEL-41000	V-1494-25B	S-1494-25	5	5	49.188	23.263	45.263	874.9
48	WCMEL-45000	V-1494-24B	S-1494-24	5	5	45.188	21.263	41.263	806.0
44	WCMEL-41000	V-1494-23B	S-1494-23	5	5	41.188	19.263	37.263	737.2
40	WCMEL-37000	V-1494-22B	S-1494-22	5	5	37.188	17.263	33.263	668.3
36	WCMEL-33000	V-1494-21B	S-1494-21	5	5	33.188	15.263	29.263	599.4
32	WCMEL-29000	V-1494-20B	S-1494-20	5	5	29.188	13.263	25.263	530.6
07	WCMEL-07000	V-1494-20B	S-1494-20	4	4	57.188	53.263	1007.0
58	WCMEL-63000	V-1494-19B	S-1494-19	4	4	53.188	49.263	938.1
08	WCMEL-41000	V-1494-18B	S-1494-18	4	4	49.188	45.263	869.3
48	WCMEL-45000	V-1494-17B	S-1494-17	4	4	45.188	41.263	800.4
44	WCMEL-41000	V-1494-16B	S-1494-16	4	4	41.188	37.263	731.5
40	WCMEL-37000	V-1494-15B	S-1494-15	4	4	37.188	33.263	662.7
36	WCMEL-33000	V-1494-14B	S-1494-14	4	4	33.188	29.263	593.8
32	WCMEL-29000	V-1494-13B	S-1494-13	4	4	29.188	25.263	525.0
28	WCMEL-25000	V-1494-12B	S-1494-12	4	4	25.188	21.263	456.1
24	WCMEL-21000	V-1494-11B	S-1494-11	4	4	21.188	17.263	387.4
20	WCMEL-17000	V-1494-10B	S-1494-10	4	4	17.188	13.263	318.4
16	WCMEL-13000	V-1494-09B	S-1494-09	4	4	13.188	9.263	249.5

ITEM#	DESCRIPTION	AMOUNT	QTY
3	PIN	S-1494-02A	SEE CHART ABOVE
2	ROLLER	F-1494-01A	SEE CHART ABOVE
1	LOCK BAR	S-1494-12 (SEE CHART ABOVE)	1
ITEM#	DESCRIPTION	AMOUNT	QTY

APPRECIATION: AFR 177
 DRAWN: ROD LAKE 4-19-07
 CHECKED: G.E. 5-4-07
 APPROVED FOR TOOLING: [Signature]
 APPROVED FOR PRODUCTION: [Signature]
 TITLE: LOCK BAR ASSEMBLY, NON-HANDED
 MATERIAL SPECIFICATION: 100% WIPAC/AMCH
 NOTES:
 *PARTIAL IDENTIFIED AND IDENTIFIED PARTS
 *INLET XXX + 4.00D XXXX + 4.00D + 4.00DIAT X = 4.27 XX = 1.5
 PARTIAL NO. C 101 V-1494-XXB
 DATE: 10/11/11
 REV: B



Architectural Testing

Test sample complies with these details.
 Deviations are noted.

Report# B2337.01
 Date 9/1/11 Tech EJ



2

1

GRAY MEDIUM DENSITY BRUSH
BLACK SOFT TOUCH CENTER FIN

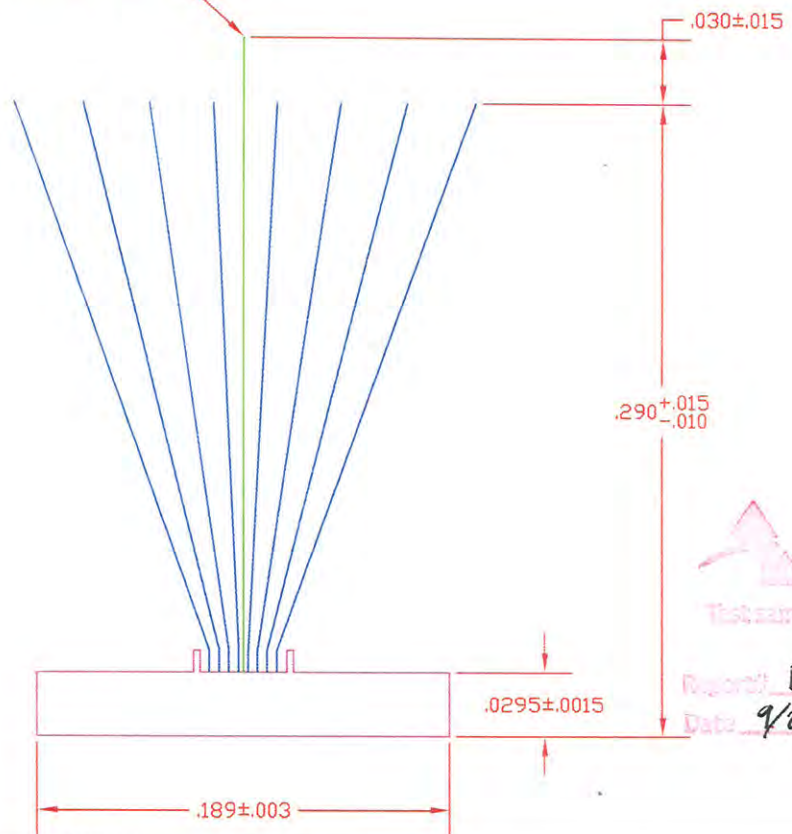
REV	DESCRIPTION	ECR #

B

B

W

W



Architectural Testing
 Test sample complies with these details.
 Deviations are noted.
 Report: B2337.00
 Date: 9/2/11 Tech: EJ

NOTES:

UNITS	.X	.XX	.XXX	.XXXX	ANGLES
INCHES•	.05	.01	.005	.0005	.5•

REMOVE ALL SHARP EDGES UNLESS OTHERWISE STATED

STD MACHINE FINISH 125

DRAWN	CAB
CHECKED	
ENGINEER	
POST PROCESS:	
HEAT TREAT:	
MAT'L:	POLYPROPELENE

ULTRAFAB
www.ultrafab.com

1050 HOOK ROAD
 FARMINGTON, NY 14425
 PHN (585) 924-2186
 FAX (585) 924-7680
 WWW.ULTRAFAB.COM

TITLE		
W33291NG		
SIZE	DWG NO	REV
SCALE: DO NOT SCALE DRAWING	SHEET OF	

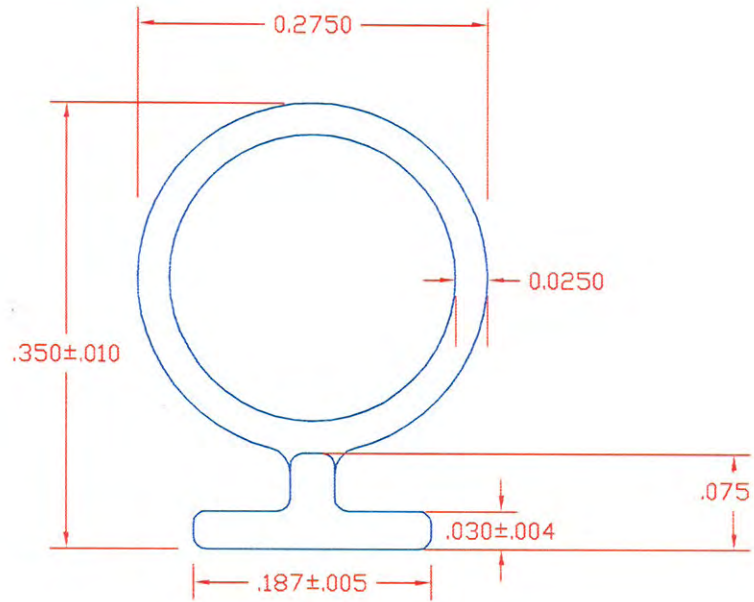
NOTICE OF CONFIDENTIAL INFORMATION: INFORMATION CONTAINED HEREIN IS CONFIDENTIAL AND PROPRIETARY IN NATURE AND SHALL AT ALL TIMES REMAIN THE PROPERTY OF ULTRAFAB, INC. AND SHALL BE USED SOLELY FOR THE PURPOSE FOR WHICH IT IS INTENDED. SPECIFICALLY, WHERE FURNISHED WITH A PROPOSAL, THE RECIPIENT SHALL USE IT SOLELY TO EVALUATE THE PROPOSAL; WHERE FURNISHED TO A CUSTOMER, IT SHALL BE USED SOLELY FOR THE PURPOSE OF INSPECTION, INSTALLATION AND/OR MAINTENANCE OF THE PRODUCT; AND WHERE FURNISHED TO A SUPPLIER, THE INFORMATION SHALL BE USED SOLELY IN THE PERFORMANCE OF THE CONTRACT WITH THE SUPPLIER. THE INFORMATION CONTAINED HEREIN SHALL NOT BE USED OR DISCLOSED BY THE RECIPIENT FOR ANY PURPOSE OTHER THAN THE PURPOSE SET FORTH ABOVE OR ANY OTHER PURPOSE THAT WAS NOT SPECIFICALLY AUTHORIZED IN WRITING BY ULTRAFAB. THE INFORMATION CONTAINED HEREIN MUST BE RETURNED TO ULTRAFAB ON DEMAND ALONG WITH ANY COPIES AND/OR DUPLICATIONS MADE OF SUCH INFORMATION. BY REVIEWING THE CONTENTS OF THIS DOCUMENT, YOU HEREBY AGREE TO ALL TO THE TERMS AND CONDITIONS SET FORTH ABOVE.


2

1

A

A



 **Architectural Testing**
Test sample complies with these details.
Deviations are noted.
Report# B2337.01
Date 9/2/11 Tech EJ

2

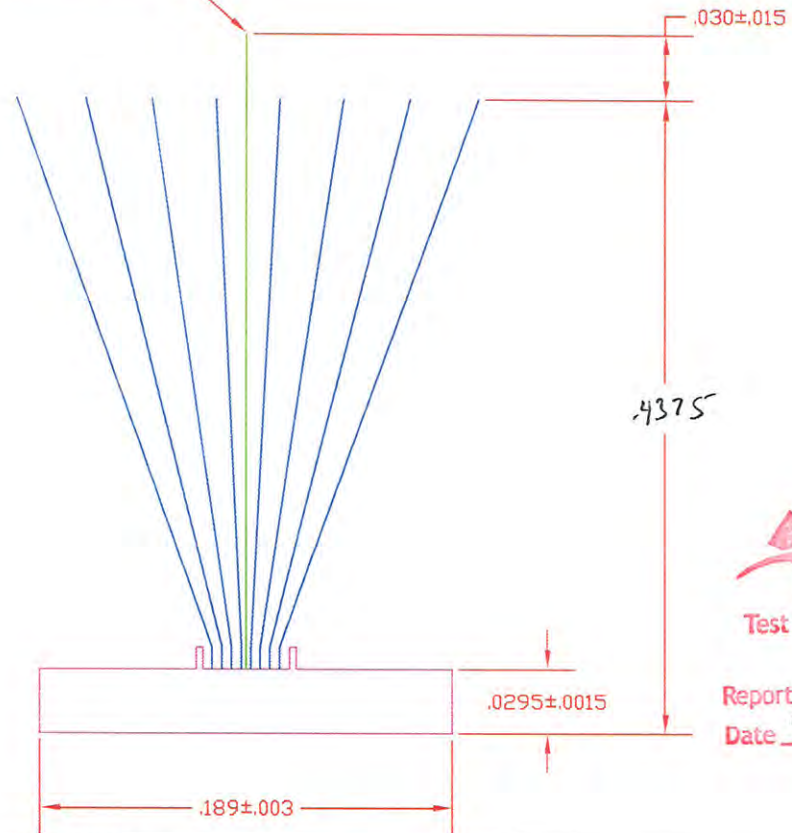
1

GRAY MEDIUM DENSITY BRUSH
BLACK SOFT TOUCH CENTER FIN

REV	DESCRIPTION	ECR #

B

B



Test sample complies with these details.
Deviations are noted.

Report# B2337.01
Date 9/2/11 Tech EJ

A

A

NOTES:

UNITS	.X	.XX	.XXX	.XXXX	ANGLES
INCHES•	.05	.01	.005	.0005	.5•

REMOVE ALL SHARP EDGES UNLESS OTHERWISE STATED

STD MACHINE FINISH 125

DRAWN	CAB
CHECKED	
ENGINEER	
POST PROCESS:	
HEAT TREAT:	
MAT'L:	POLYPROPELENE

ULTRAFAB
www.ultrafab.com

1050 HOOK ROAD
FARMINGTON, NY 14425
PHN (585) 924-2186
FAX (585) 924-7680
WWW.ULTRAFAB.COM

TITLE		W33291NG
SIZE	DWG NO	
SCALE: DO NOT SCALE DRAWING	SHEET	OF

NOTICE OF CONFIDENTIAL INFORMATION: INFORMATION CONTAINED HERIN IS CONFIDENTIAL AND PROPRIETARY IN NATURE AND SHALL AT ALL TIMES REMAIN THE PROPERTY OF ULTRAFAB, INC. AND SHALL BE USED SOLELY FOR THE PURPOSE FOR WHICH IT IS INTENDED. SPECIFICALLY, WHERE FURNISHED WITH A PROPOSAL, THE RECIPIENT SHALL USE IT SOLEY TO EVALUATE THE PROPOSAL; WHERE FURNISHED TO A CUSTOMER, IT SHALL BE USED SOLEY FOR THE PURPOSE OF INSPECTION, INSTALLATION AND/OR MAINTENANCE OF THE PRODUCT; AND WHERE FURNISHED TO A SUPPLIER, THE INFORMATION SHALL BE USED SOLEY IN THE PERFORMANCE OF THE CONTRACT WITH THE SUPPLIER. THE INFORMATION CONTAINED HEREIN SHALL NOT BE USED OR DISCLOSED BY THE RECIPIENT FOR ANY PURPOSE OTHER THAN THE PURPOSE SET FORTH ABOVE OR ANY OTHER PURPOSE THAT WAS NOT SPECIFICALLY AUTHORIZED IN WRITNG BY ULTRAFAB. THE INFORMATION CONTAINED HEREIN MUST BE RETURNED TO ULTRAFAB ON DEMAND ALONG WITH ANY COPIES AND/OR DUPLICATIONS MADE OF SUCH INFORMATION. BY REVIEWING THE CONTENTS OF THIS DOCUMENT, YOU HEREBY AGREE TO ALL TO THE TERMS AND CONDITIONS SET FORTH ABOVE.

2

1

A

A